

James Douglas Company, Architects,

460 Jefferson St., MILWAUKEE.

WES AND BUSINESS DIRECTORY. WES 1097

Sievers Mrs Ida, milliner.
 Silberzohn Mnf'g Co, Charles Silberzohn
 pres, C A Silberzohn sec, machinists.
 Silver Lake Ice Co, B S Potter genl mngr,
 roller mills.
 Stransky Joseph R, propr City Hotel.
 Stupfel Rev J P (Cathole).
 Taylor John A, livery.
 Terborg Rev J (Lutheran).
 Thielges John, saloon.
 Treviranus John, propr Revere House.
 Tull Rev A (Methodist).
 Wagner Bros (Herman J and Adam M),
 general store.

Washington County Pilot, D T Keeley
 Propr.

Washington County Publishing Co,
 Arthur Franckenberg Mngr. (See adv.)

Washington House, Nic Guth Jr
 Propr. (See adv.)

Wehle Wm J, drugs.
 Weiland's Hotel, John Weiland propr.
 Wendelborn John, barber.
 Werner August, blacksmith.
 West Bend Brewing Co, S F Meyer pres,
 Andrew Pick sec.

West Bend Democrat, Washington
 County Publishing Co, Publr. (See adv.)

West Bend Echo, Joseph M Sevenich propr.
 West Bend Roller Mills, Silver Lake Ice
 Co proprs.

Westenberger Frederick, meats.
 Wieser Franz, baker.
 Wolfrum Frederick, drugs.
 Wolfrum Wm, dentist.

Yahr Julius, Livery, Sale and Board-
 ing Stables. (See adv.)

Yahr Solon, fruit grower.
 Zettler Joseph, carpenter.
 Ziegler Jacob, saloon.

WEST BLOOMFIELD.

A village in Waushara county, 26 miles
 northeast of Wautoma, the county seat,
 and 7½ south of Weyauwega, on the Wis-
 consin Central Line, the nearest railroad
 station and banking point. Population, 300.
 Mail, daily. A. Bast, postmaster.

Bast August, General Store and
 Cheese Mnfr.

Bloomfield Insurance Co, August Hanne-
 mann sec.

Boelter Otto, carpenter.
 Feustal Rev G A (Lutheran).

Kluge Otto, carpenter.
 Koehler Herman, gen store and cheese mnfr.

Loose Wm, blksmith and saloon.
 Noak Edward, meat market.

Noedeger Christ, music teacher.
 Windt R, blacksmith.

Wolf F E, carpenter.

WEST BLUE MOUNDS.

Dane county. Name changed to Blue
 Mounds.

WESTBORO.

A village on the Wisconsin Central Line,
 in Taylor county, 16 miles north of Med-
 ford, the county seat and banking point.
 Population, 800. Tel., W. U. Exp., Nation-
 al. W H Taylor, postmaster.

Campbell Peter, hotel.
 Castagnet A, saloon.

Duncan John, General Store, Saw and
 Shingle Mill.

Fournier Antoine, saloon.

Grossman A, saloon.
 Reuprisch Frank, shoemaker.
 Silvernail Ralph, railroad and exp agt.
 Swan Mrs J R, hotel.
 Taylor W H, general store.
 Tripping Joseph, saloon.

WESTBY.

A village on the C., M. & St. P. Ry, in
 Christiana township, Vernon county, 7½
 miles northeast of Viroqua, the county
 seat and nearest banking point. Popula-
 tion, 500. Tel., W. U. Exp., U. S. M. B.
 Davidson, postmaster.

Amundson Bros, meat market.
 Anderson B, hotel.

Balsrud C H, general store.
 Boyd C L, grain.

Dahl A H, general store.
Davidson M B, Furniture.

Eckhart & Co, grain.
 Emmons George, conf and barber.

Farmers' Alliance, general store.
 Halverson Rev H (Lutheran).

Hanson B, shoemaker.
 Jefson C M, meat market.

Johnson A, railroad and exp agt.
 Johnson J, boots and shoes.

Johnson M, blacksmith.
 Lee Andrew, livery.

Lein O M, hardware.
 Lowen Rev O R (Methodist).

Metby & Thorsen, Hardware.
 Michaelson John, blacksmith.

Michlet J G, general store.
 Moen A J, wagonmkr and justice.

Nestingen C & Co, live stock.
 Noeltwet Rev C M (Lutheran).

Olson Charles, harnessmaker.
 Rainsland E F, drugs.

Reed Hans, blacksmith.
 Sangstad E F, farm impts.

Schee John, physician.
 Schreiner John K, physician.

Seen Matthew, restaurant.
 Shannon C T, leaf tobacco.

Thorsen Christian, farm impts.
 Thorsen Theodore & Co, planing mill.

Thorsen Thomas, carpenter.
 Westby Band.

Westby O T, General Store.

WEST DENMARK.

A postoffice in Polk county, 24 miles from
 Osceola Mills and 16 from St. Croix Falls,
 its banking and shipping point. Popula-
 tion, 150. Mail, tri-weekly. M. C. Pederson,
 postmaster.

Danish Theological Seminary, Rev Thor-
 vald Helveg pres.

Hansen Neils, wagonmaker.
 Helveg Rev Thorvald (Lutheran).

Hjort Hans J, creamery.
 Jensen H C, carpenter.

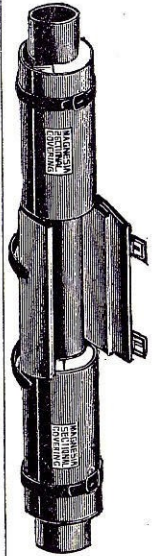
Paulsen Paul A, gen store and saw mill.
 Pederson Christian, justice of peace.

Pederson M C, Flour Mill.
 Pederson Peter D, blacksmith.

Peterson J P, general store.
 Ravnholt A C, creamery and carp.

WEST DE PERE.

This enterprising little city became the
 3d and 4th wards of De Pere, Aug. 20, 1889,
 when the two cities consolidated under the
 name of De Pere. The postoffice was,



ABSOLUTE
 FIRE-PROOF
 MAGNESIA
 SECTIONAL
 STEAM PIPE
 COVERINGS.
 The Great
 Coal Sever.
 Frederick Spinkmann,
 Dealer in Mineral Wool and Hair Felt, Office
 and Factory, Milwaukee, Wis. Tel. 1372.

Post's Fair, 10, 12 and 14 Fourth St., Fond du Lac, Wis., is the Place to Buy PARLOR SETS, over 200 Styles