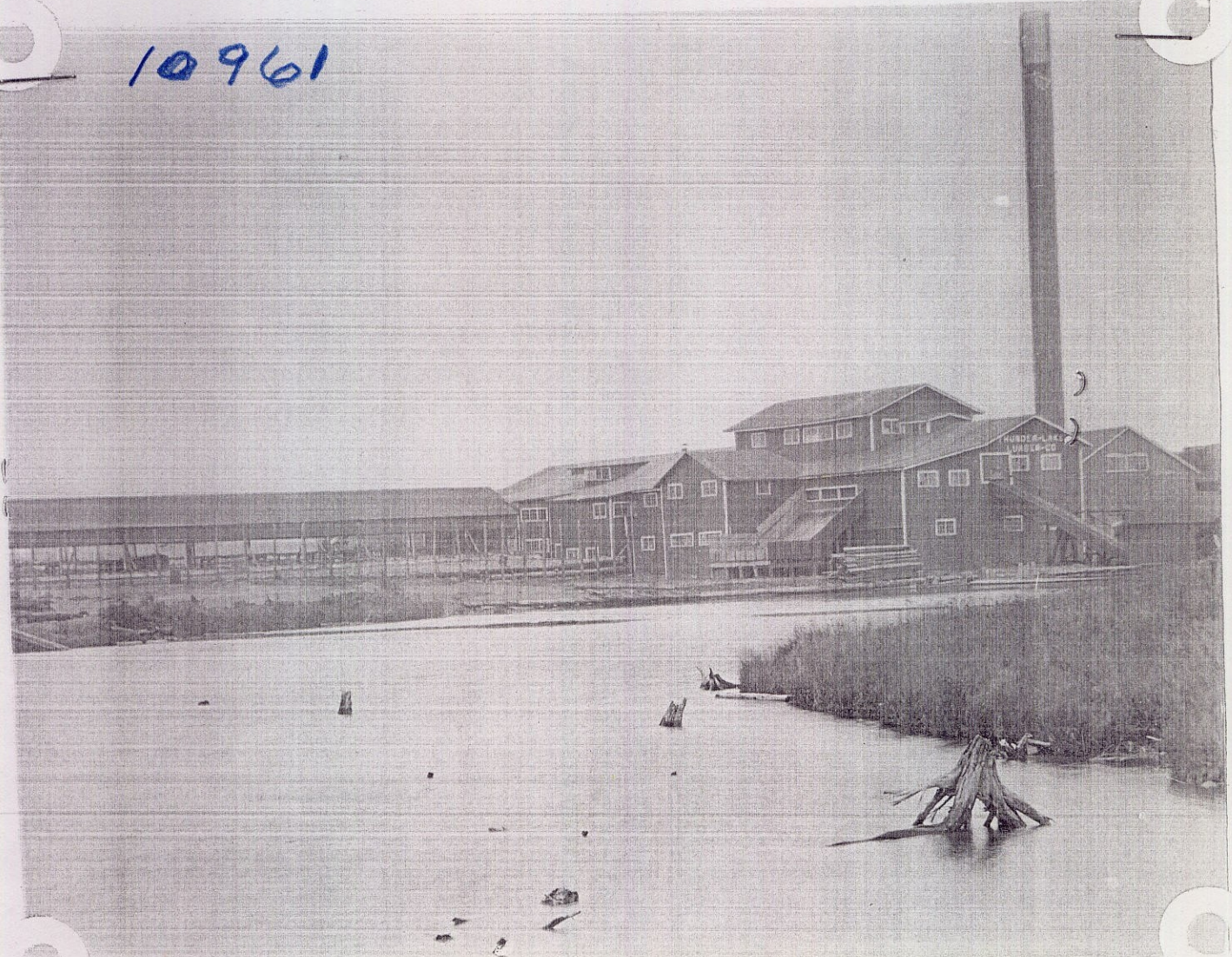


10961



Thunder Lake Lumber Co. Rhinelander Wis
1919 - 1946

President	John D. Hughes	(
Vice Pres.	Lytle P. Woodson)
Treasurer	D. D. Suttiff	
Secretary	R. J. Mueller	
Director	Chas. Lowett	
Director	John Moen Pres First Natl Bank Rhinelander Wis	
Woods Dept.	Dwain Caldwell Edw. Synott	
Camps Foremen	John Bell	
" Mill Dept "	Nels Stromberg	
Mill Dept	Henry Lee	
Railroad Dept	Geo. Smith	
Store manager	Roy Cunningham	
Office manager	Ken Mayer	

Third Company organized during the summer of 1919 to purchase the
Saw mill, Planing mill, office, Robbins Ry Co + Robbins timber.